

# Model: B3020

## Forced air convection reflow oven



- ◆ Full hot air convection
- ◆ 4 Zone control
- ◆ PCB width up to 365mm
- ◆ Glass top design
- ◆ Built-in temperature profile
- ◆ Computer Control

BS3020 is a high performance full hot air convection reflow soldering system with computer control which can handle boards up to 365mm width with less than  $\pm 2^{\circ}\text{C}$  temperatures gradient.

### Glass top design

Glass top viewing panel allows visual inspection of reflow process.

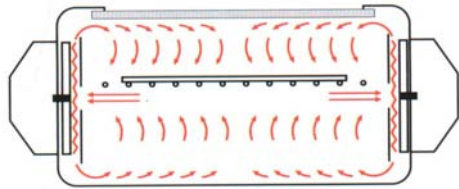
### Temperatures profile

Built-in two detachable thermocouples for measuring substrate temperatures at real time.

### User friendly control

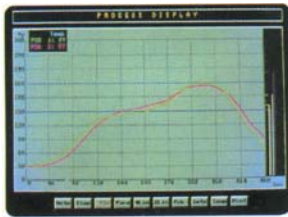
Full computer control with color graphics system ensures operator training with simple menu driven commands.

## ADVANTAGES



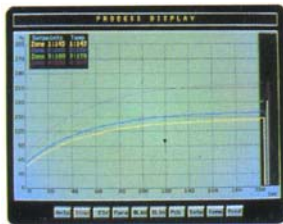
Superior temperature control the heaters are placed up right opposite the conveyor belt and hot air circulation, therefore occurs vertically. This prevents heat reflection onto the print.

The operator console  
Consists of a colour  
/graphic monitor and  
a joystick.



Temperature profiles may be checked and recorded by two thermocouples attached to a product passing through the process area.

The on-screen profile status report provides information including time above user set level.



## SPECIFICATIONS

Process chamber	:	1400mm
Soldering width	:	365mm
Clearance for assemblies	:	25mm
Transport system	:	Stainless steel spring wires conveyor belt.
Conveyor speed	:	10-120cm/min
Soldering temperatures	:	180-260°C
Temperature accuracy	:	±1°C
Temperature profile	:	Built-in two thermocouples Provide real time measuring
Number of zones	:	4
Warm-up time	:	15min
System control	:	PC486 or above
Power	:	220/380 VAC3-phase Rated power max:7800 Watts
Dimensions	:	L×W×H (2260×860×360) mm
Net weight	:	160kg
Option	:	Cabinet

